

## 1. Overview

The MEH-B is a device which allows user to remotely monitor and control TBB's Battery.  
The user can learn below information from MEH-B's display:  
Battery voltage, current and SOC

## 2. Installation and connection

### 2.1 Installation

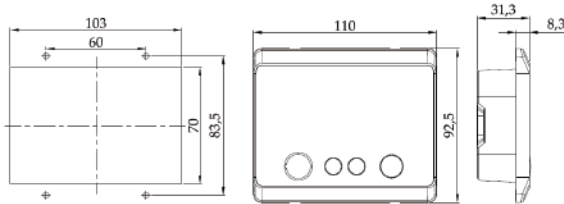


Fig.1 Installation dimension of MEH-B (Unit:mm)

Installation step:

- 1) Cut holes on mounting surface following the cut-out dimension of solid line area in Fig.1
- 2) Place the MEH-B in position properly and fix the MEH-B by 4pcs M3\*12 screws.

### 2.2 Connection

Use the cable provided by TBB Power to connect MEH-B with M series battery, the connector is RJ45. The cable is available in 5, 10, 15, 20, 25 or 30 meters.

1

## 3. Display information

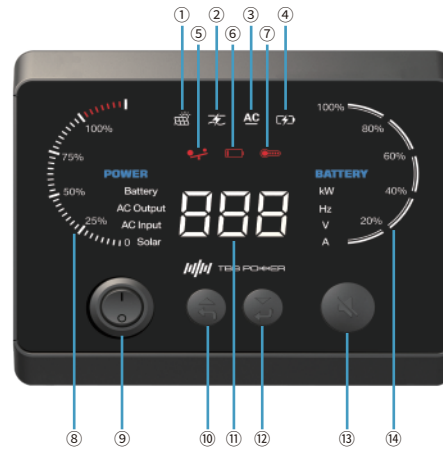


Fig.2 Display and buttons of MEH-B

2

Table 1 Display and buttons of MEH-B

①	Solar	unused
②	Invert	unused
③	Bypass	unused
④	Charge	To indicate M series battery is charging
⑤	Overload alarm	To indicate when battery is overloaded
⑥	Battery low voltage alarm	To indicate when the internal battery reach under-voltage
⑦	temperature alarm	To indicate when the system is over-temperature or low temperature
⑧	Power percentage	To indicate the percentage of actual power against rated power of battery installed
⑨	ON/OFF switch	To turn battery ON or OFF
⑩	Scroll up button	To scroll up to last item.
⑪	Value information area	LCD displaying value
⑫	Scroll down button	To scroll down to next item.
⑬	Mute button	To mute or unmute the alarm
⑭	Battery SOC	To indicate battery state of charge

Use the scroll up or scroll down button to switch display information among Battery

Table 2 Display information in value area

Display information		Item
Battery	V	Battery voltage
	A	Battery current
	/	Battery SOC

3

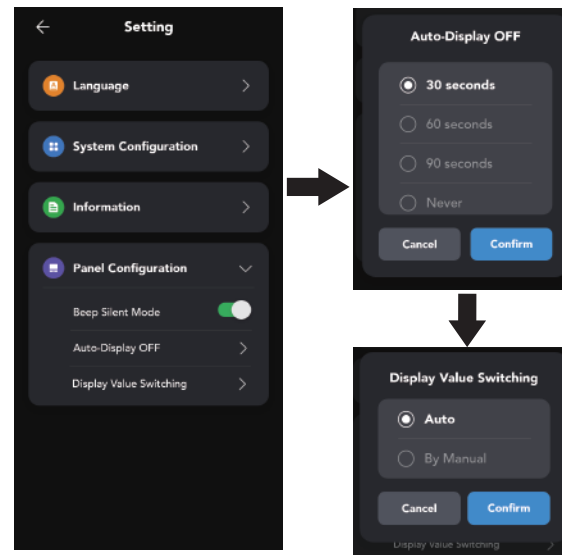
## 4. Error and Warning

Error code		
BMS Error	ERR400	Module_OV
	ERR401	Module_UV
	ERR402	Module_OT
	ERR403	Module_UT
	ERR404	Discharge_OC
	ERR405	Charge_OC
	ERR406	Module_INT_Err
	ERR407	Outside_over_voltage
	ERR408	Switch_or_BMS_over_temperature
Alarm code		
BMS Alarm	ALM409	Module_HV
	ALM410	Module_LV
	ALM411	Module_HT
	ALM412	Module_LT
	ALM413	Discharge_HC
	ALM414	Charge_HC
	ALM415	EXT_CommFail
	ALM416	SOC_Low
	ALM417	Switch_or_BMS_high_temperature

4

## 5. APP

- 1) The backlit of MEH will be turned OFF automatically without operation on MEH. The time of turn OFF can be set in mobile APP (See below screenshot)



5

- 2) MEH with Bluetooth connectivity to support mobile APP. The mobile APP can be downloaded by below QR codes



M Battery -Google Play



M Battery - APP Store

6